

SafeGard™

HIGH PERFORMANCE ESPAGNOLETTES

Our unique Safeguard range of high performance espagnolettes offer the optimum in both performance and security. Clever design not only ensures you minimise inventory demands but allows for quick and simple assembly, so you always get an ideal result.

For more information on the Safeguard range, or to arrange a full demonstration of their outstanding performance, simply call the Safeguard sales office on +44 (0)1462 815500.



Schlegel UK

Henlow Industrial Estate

Henlow Camp

Bedfordshire SG16 6DS

Telephone: +44 (0)1462 815500

Fax: +44 (0)1462 811963

Email: schlegeluk@schlegel.eu.com

Web: www.schlegel.co.uk

SafeGard™

HIGH PERFORMANCE ESPAGNOLETTES

THE ULTIMATE
IN SECURITY
MANAGEMENT



When experience counts

Schlegel is one of the UK's leading suppliers of security hardware to the windows and doors industry, with over 25 years' experience of designing, engineering and manufacturing some of the most secure locks available.

Safeguard, our range of high performance espagnolettes, has been designed based on this experience and as part of our on-going programme of research and development, to meet the ever more exacting demands of modern window security.

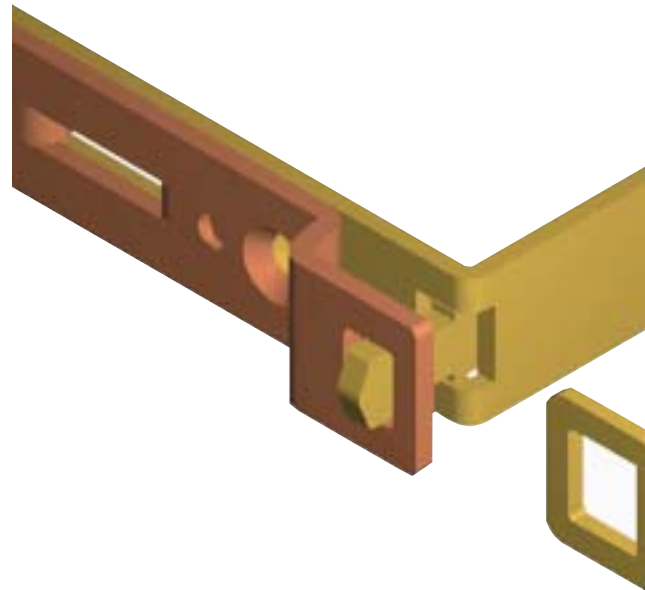
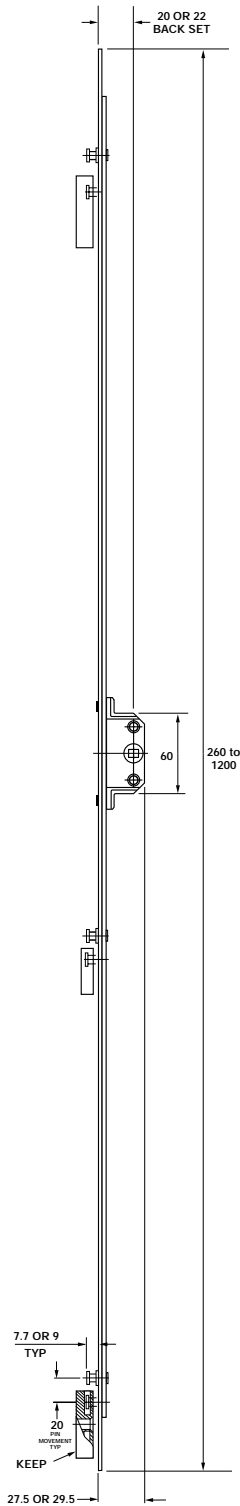
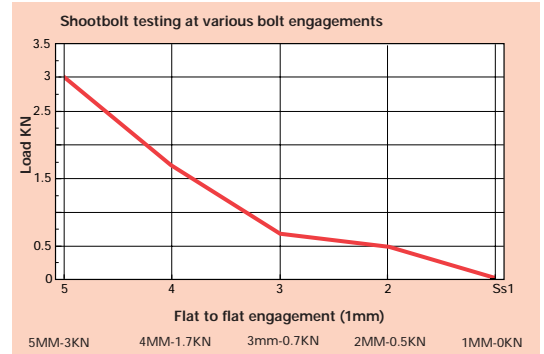
Engineered to suit PVCu profiles with either full depth or shallow Eurogrooves, Safeguard offers not only outstanding performance and security but overcomes one of the major reasons why so many windows fail to meet the requirements of BS 7950 - the virtually impossible to achieve air-gap tolerances.

ACHIEVING THE IMPOSSIBLE

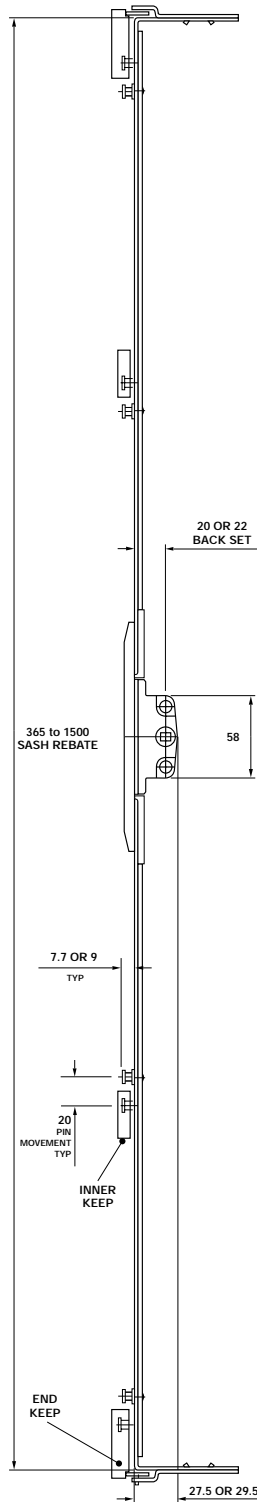
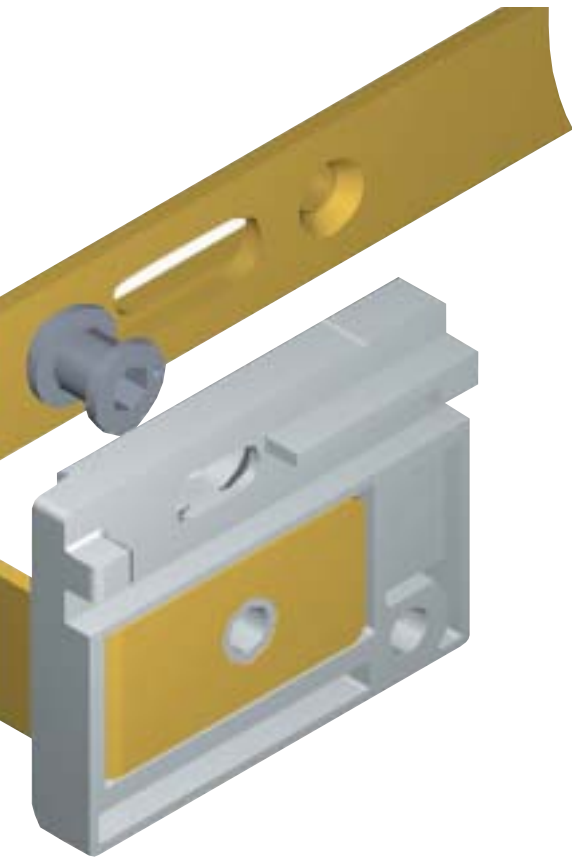
Safeguard was created to ensure every window produced delivers the optimum forced-entry resistance, time after time, without fail.

Traditionally, shootbolt resistance to forced-entry is dictated by the flat-to-flat engagement between locking points and keeps. Our answer to these air-gap tolerance problems is the unique Safeguard locking system. The keep and guide arrangement in which the keep is positioned between the guide and sash ensures the locking points are always in double shear and that the keeps are perfectly aligned.

This graph dramatically illustrates just how effectively this improves window performance.



10
YEAR
GUARANTEE



PROVEN IN PRACTICE

As a result of our many years of experience designing and testing windows and their fittings, we achieve such exceptional performance very simply - no extra operation, no unrealistic tolerances and no extra components to stock.

The Safeguard range also incorporates a number of design advances which allow you to not only optimise your manufacturing output, but also offer your customers outstanding security and with it, peace of mind.

- Choice of 6 sizes
- Suitable for sashes from 365 - 1500mm
- 'Mushroom' keeps are common to all variants
- Smooth, easy locking is ensured by the use of a rack and pinion gearbox
- Good weather resistance for sashes over 1000mm is ensured by the use of a third locking point
- Preparation for fitting common to all variants
- Quick and easy to assemble
- Designed to minimise inventory output, for example, the use of non-handed keeps throughout

EXCEPTIONAL PERFORMANCE - GUARANTEED

We are totally confident that the Safeguard range delivers outstanding security and performance for both you and your customers. However, every single Safeguard product is covered by our full 10 year guarantee.

In addition, and as with all our products, the Safeguard range is rigorously tried and destructively tested to ensure it meets and exceeds the very highest standards:

- Corrosion resistance to BS 7412
- Shootbolt version conforms to BS 7950 (the secondary end guide is not essential to achieve BS 7950)

